



Websites:- [www.tweedneighbourhoodwatch.org](http://www.tweedneighbourhoodwatch.org)

[www.facebook.com/TweedByronLAC](https://www.facebook.com/TweedByronLAC)

Email:- [pottsvillebeach.nhw@outlook.com](mailto:pottsvillebeach.nhw@outlook.com)

### “Schools Back”—Road Safety around Our Schools

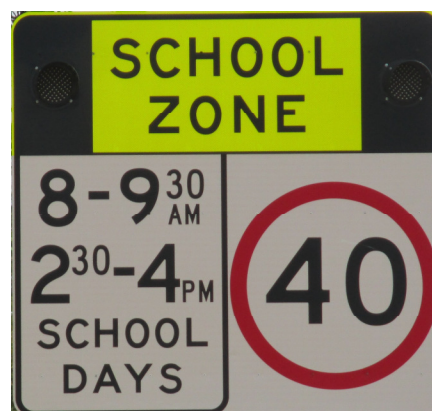
**Our Local Schools** now have Flashing Lights indicating the 40km/h school zone.

The 40km/h school zone slows traffic in the vicinity of the school.

Most 40km/h school zones operate between 8am and 9.30am and from 2.30pm till 4pm. The 40km/h school zone speed limit must be observed even if school children cannot be seen.

A 40km/h school zone operates on all gazetted school days including staff development days (pupil free days).

While some schools may operate on different term dates, school zone speed limits **MUST** be adhered to during NSW Government determined school terms.



NSW GAZETTED SCHOOL TERM DATES

Term 1	27 January to 2 April 2015
Term 2	20 April to 26 June 2015
Term 3	13 July to 18 September 2015
Term 4	6 October to 18 December 2015

#### Driving near school buses

There is a 40km/h speed limit for traffic passing a school bus that is setting down or picking up school children.

This speed limit is for all traffic travelling in the same direction as the bus, whether the bus is stationary or moving.

The 40km/h speed limit must be obeyed when the rear wig wag lights on the bus flash.

Flashing headlights on these buses also alert oncoming motorists that children are close by.

As a driver, remember: When the lights on the bus are flashing, you must slow down to 40 km/h.

Next Meeting:- Thursday 5th February 2015 - 3.00pm to 4.00pm  
Reef Room, Pottsville Beach Neighbourhood Centre  
Elizabeth Street, Pottsville Beach

Police, Fire, Ambulance  
**000**  
In an emergency

SES  
**132 500**  
State Emergency Service

Police Assistance Line  
**131 444**  
For non emergencies



Next Meeting

Thursday 5th February 2015

Time:- 3.00pm to 4.00pm

Where:- Reef Room,  
Pottsville Beach Neighbourhood Centre,  
Elizabeth Street,  
Pottsville Beach.

Open Meeting—All Welcome

Pottsville Beach Area 11

Reported Crime Statistics for

Oct, Nov, Dec 2014

Assault: \_\_\_\_\_ 11 incidents.

Break and Enter: \_\_\_ 3 incidents.

Stolen Vehicles: \_\_\_\_ 2 incidents.

Stealing: \_\_\_\_\_ 1 incidents.

Malicious Damage: \_\_ 4 incidents.

Help to reduce crime by reporting all incidents  
no matter how minor. For non-urgent assistance

Police Assistance Line

**131 444**

**Total Number of Incidents Reported per Month**

	Jan	Feb	Mar	Apr	May	Jun	Jul	Aug	Sep	Oct	Nov	Dec
<b>Pottsville Beach</b>	7	7	9	22	10	1	4	14	6	10	4	7
<b>Kingscliff</b>	6	3	28	23	27	12	3	24	7	14	17	12
<b>Cabarita</b>	5	2	18	7	10	6	2	6	7	2	3	5
<b>Chinderah</b>	1	6	4	5	4	2	0	6	1	4	0	4
<b>Casuarina</b>	2	1	5	7	4	2	0	5	2	0	0	5
<b>Total</b>	21	19	64	64	55	23	9	55	23	30	24	33



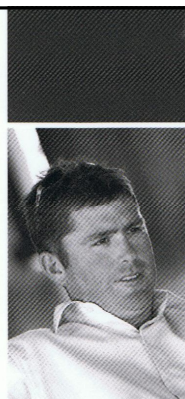
**Working for Safer Communities**



**first national**  
REAL ESTATE | Pottsville Beach

**Ben Charlton**  
SALES MANAGER

MOBILE 0402 081 976  
PHONE (02) 6676 1053 FAX (02) 6676 2154  
EMAIL [ben@pottsville.com.au](mailto:ben@pottsville.com.au)  
WEB [www.pottsville.com.au](http://www.pottsville.com.au)



**Roger McLeod**  
Director/ Licensee

m: 0418 752 343  
p: (02) 6676 2997  
f: (02) 6676 2044  
e: [rog@pottsvillebeachrealestate.com.au](mailto:rog@pottsvillebeachrealestate.com.au)

Shop 1, 1 Coronation Avenue  
Pottsville Beach NSW 2489  
[www.pottsvillebeachrealestate.com.au](http://www.pottsvillebeachrealestate.com.au)

We would like to thank our sponsors for their assistance in printing and distribution of this Newsletter

John Wightman & the Staff of IGA Pottsville

Roger McLeod  
*Professionals*  
Pottsville Beach

Justine Elliot MP & her Staff  
Federal Member for  
Richmond

Ben Charlton  
FIRST NATIONAL  
Pottsville Beach

Staff & Volunteers of Pottsville Beach Neighbourhood Centre